

# Middle Magma Arizona Regional Flood Control Project

## Magma Flood Control District

Pinal County, Arizona



### Notice of Availability

Natural Resources Conservation Service (NRCS) and Magma Flood Control District (MFCD) are pleased to announce the release of a Draft Watershed Plan and Environmental Assessment (Plan-EA) for the Middle Magma Arizona Regional Flood Control Project. The Draft Plan-EA describes the proposed action, which includes channelization of Middle Magma Wash/Channel with bank protection, and analyzes the potential impacts to the study area.

**The public is invited to comment and attend a virtual meeting to learn about the project and the proposed action.**

### Purpose and Need

For many years, flood risks have existed and flooding has occurred near residential and agricultural areas along portions of the Middle Magma Channel (MMC) segment of Magma Wash, endangering homes, infrastructure, and threatening public safety. The purpose of the project is to reduce flood damages (and associated sediment damages) to residential, commercial, and agricultural areas; canals and irrigation systems; and road and railway transportation corridors through implementation of flood damage reduction measures and sound flood risk management planning to provide a continuous drainage system for the Middle Magma Watershed. Action is needed to achieve reduced damages from floodwater (and associated sediment), reduced erosion potential of channel banks, adequate flood flow capacity of the MMC, adequate freeboard (i.e. feet above flood level), necessary drainage performance standards, increased public health and safety, and better regional flood mitigation planning.

### Proposed Action

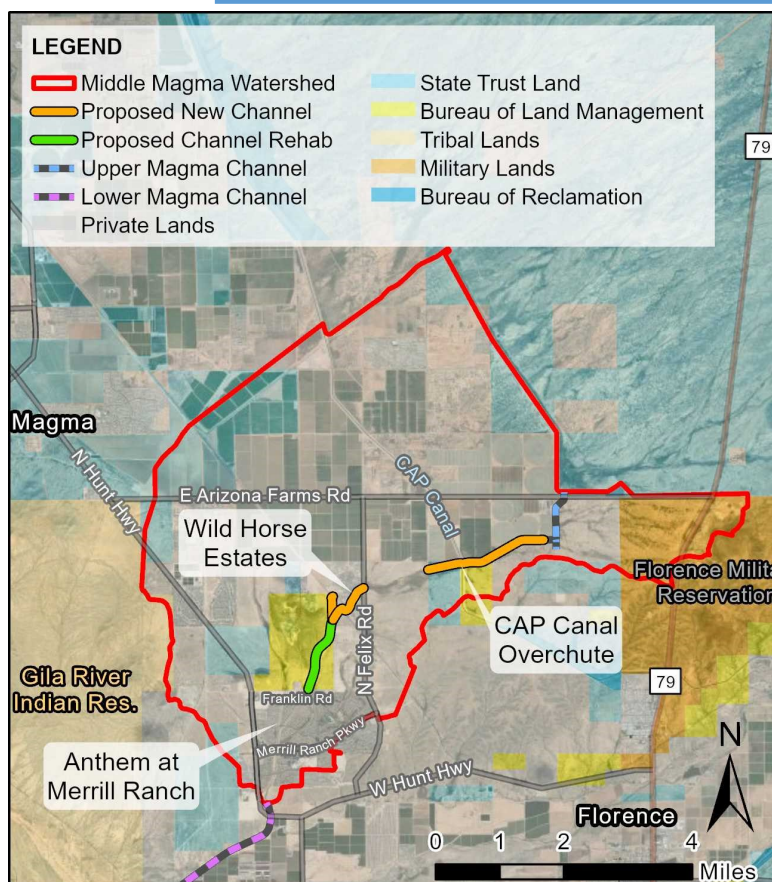
In order to reduce flood damages, MFCD is proposing to channelize and rehabilitate approximately 4 miles of the MMC with bank protection to contain and convey a 100-year flood event. A newly constructed channel would extend from the downstream end of the Upper Magma Channel (see image to the right) to the Central Arizona Project Canal overchute through private and Bureau of Land Management lands; across Arizona State Trust Land; and through the residential community of Wild Horse Estates. Downstream of Wild Horse Estates, the existing channel would be rehabilitated through undeveloped private land and Bureau of Land Management land. Improvements would terminate at the Anthem at Merrill Ranch community where there is already a fully constructed channel for the MMC from Franklin Road to its downstream terminus at the upstream extent of the Lower Magma Channel. Consistent with EO 11988, this project occurs in floodplains and as such, a 30 day public review period has been identified. This review period begins from the date of initial publication and ends 30 days afterwards.

### Public Meeting

The public is invited to attend, discuss, and submit comments during a virtual meeting:  
Thursday, August 10, 2023, 5:30-7:00pm AZ Time  
Location: Zoom (virtual)  
<https://jefuller.zoom.us/j/85368182662>  
**+1 669 444 9171 Meeting ID: 853 6818 2662**

### Submitting Comments

All comments should be directed to:  
JE Fuller  
PO Box 30190, Flagstaff, AZ 86003  
Planning@MiddleMagmaRFCP.com  
[www.MiddleMagmaRFCP.com](http://www.MiddleMagmaRFCP.com) (online form)  
Comments must be mailed, emailed, or submitted online. **Comments must be received no later than 5 PM on Friday, September 8, 2023.**



**The Draft Plan-EA and additional project information can be found online: [www.MiddleMagmaRFCP.com](http://www.MiddleMagmaRFCP.com)**